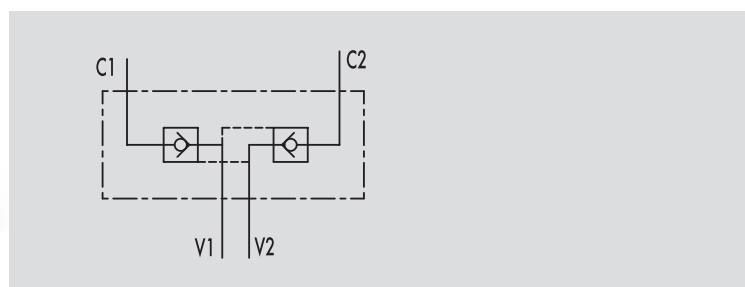
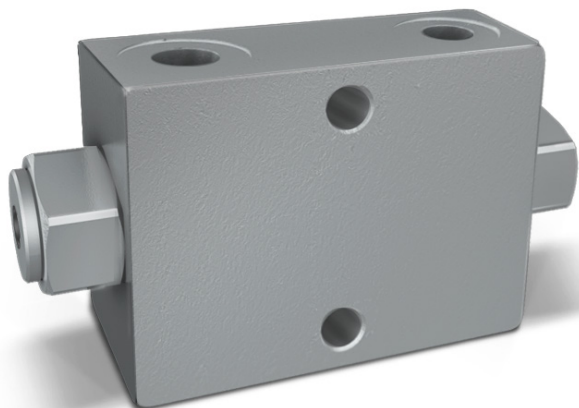


VALVOLE DI BLOCCO PILOTATE A DOPPIO EFFETTO TIPO A

TIPO / TYPE
VBPDE ASCHEMA IDRAULICO
HYDRAULIC DIAGRAMDOUBLE PILOT OPERATED
CHECK VALVES - TYPE A**IMPIEGO:**

Valvola utilizzata per bloccare in posizione un cilindro in entrambi i sensi, consentendo il flusso in una direzione ed impedendolo in senso contrario fino a quando non viene applicata la pressione di pilotaggio.

MATERIALI E CARATTERISTICHE:

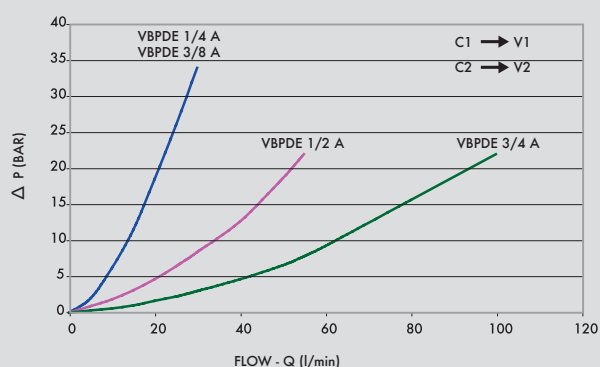
Corpo: acciaio zincato
Componenti interni: acciaio temprato termicamente e rettificato
Guarnizioni: BUNA N standard
Tenuta: a cono guidato. Non ammette trafilementi

MONTAGGIO:

Collegare V1 e V2 all'alimentazione e C1 e C2 all'attuatore.

A RICHIESTA

- senza guarnizione OR sul pilota
- Molla 1 Bar
- Molla 8 Bar

PERDITE DI CARICO
PRESSURE DROPS CURVE**USE AND OPERATION:**

Pilot check valves are used to block the cylinder in both directions. Flow is free in one direction and blocked in the reverse direction until pilot pressure is applied.

MATERIALS AND FEATURES:

Body: zinc-plated steel
Internal parts: hardened and ground steel
Seals: BUNA N standard
Poppet type: any leakage

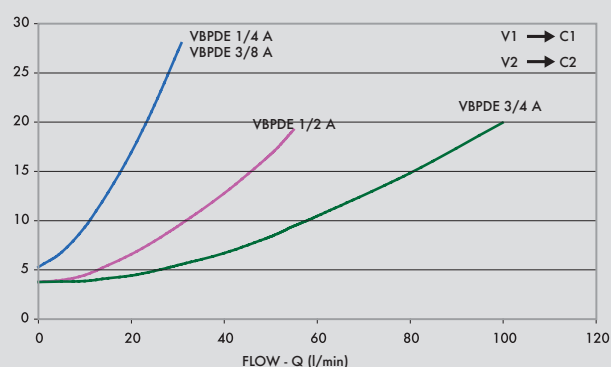
APPLICATIONS:

Connect V1 and V2 to the pressure flow and C1 and C2 to the actuator.

ON REQUEST

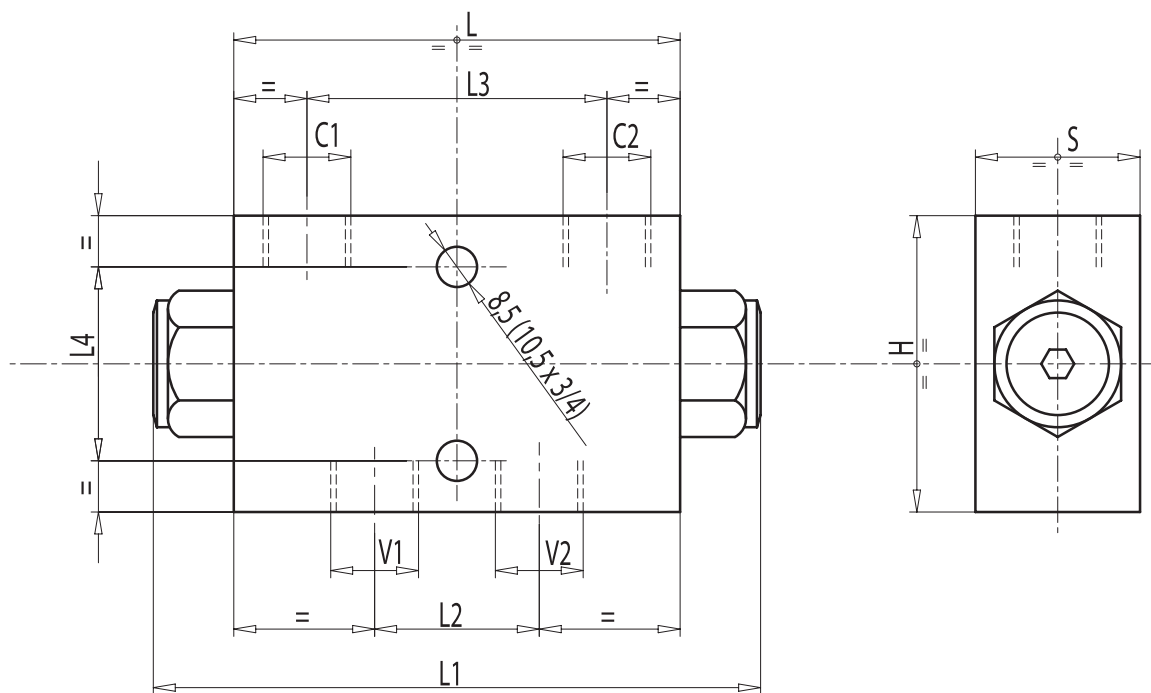
- without seal on pilot piston
- 1 Bar spring
- 8 Bar spring

Temperatura olio: 50 °C - Viscosità olio: 30 cSt
Oil temperature: 50 °C - Oil viscosity: 30 cSt





| CODICE CODE | SIGLA TYPE | RAPP. PILOT PILOT RATIO | PORTATA MAX MAX FLOW Lt. / min | PRESSIONE MAX MAX PRESSURE Bar | PRESSIONE APERTURA CRACKING PRESSURE Bar |
|----------------|---------------|----------------------------|--------------------------------------|--------------------------------------|--|
| V0178 | VBPDE 1/4" A | 1:5,5 | 20 | 350 | 4,5 |
| V0180 | VBPDE 3/8" A | 1:5,5 | 30 | 350 | 4,5 |
| V0190 | VBPDE 1/2" A | 1:4,5 | 55 | 350 | 5,5 |
| V0191 | VBPDE 3/4" A | 1:3,7 | 100 | 350 | 3 |



| CODICE CODE | SIGLA TYPE | V1 - V2 C1 - C2 GAS | L mm | L1 mm | L2 mm | L3 mm | L4 mm | H mm | S mm | PESO WEIGHT kg |
|----------------|---------------|---------------------------|---------|----------|----------|----------|----------|---------|---------|----------------------|
| V0178 | VBPDE 1/4" A | G 1/4" | 80 | 113 | 27 | 52 | 44 | 60 | 30 | 1,032 |
| V0180 | VBPDE 3/8" A | G 3/8" | 80 | 113 | 30 | 52 | 44 | 60 | 30 | 0,994 |
| V0190 | VBPDE 1/2" A | G 1/2" | 115 | 147 | 39 | 80 | 40 | 80 | 35 | 2,324 |
| V0191 | VBPDE 3/4" A | G 3/4" | 158 | 198 | 50 | 105 | 58 | 80 | 50 | 4,800 |