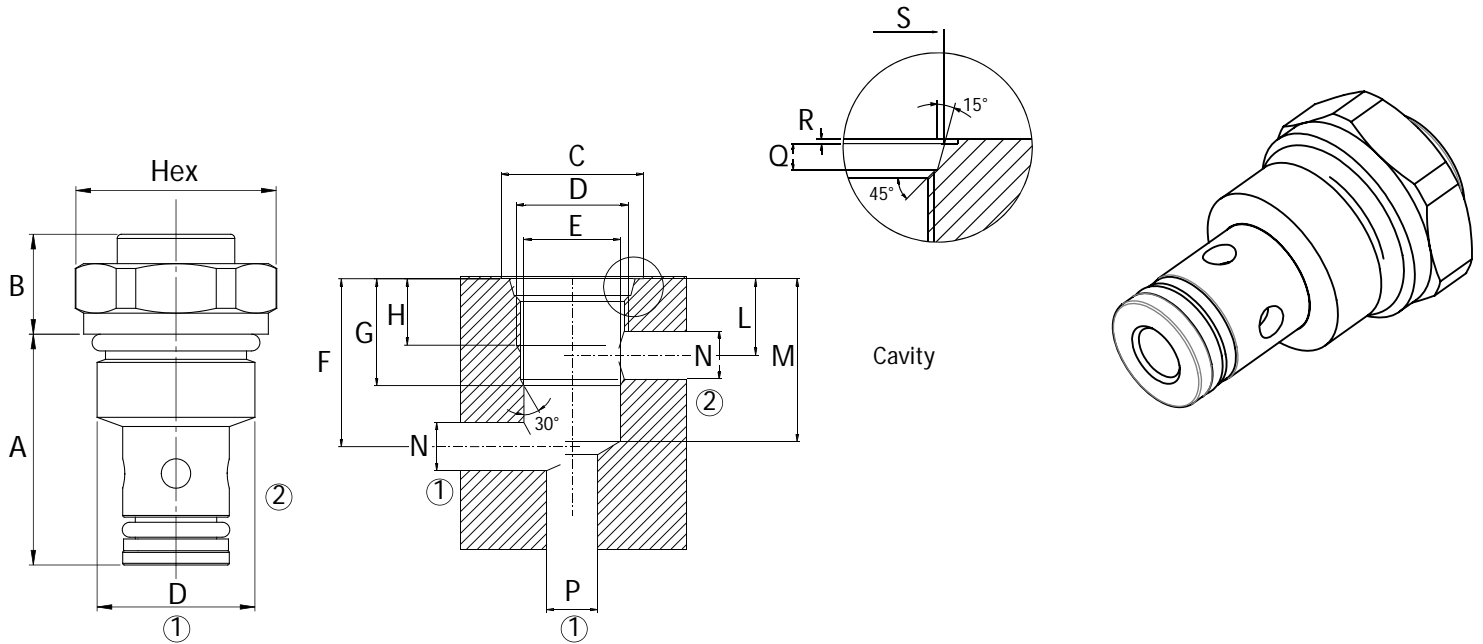
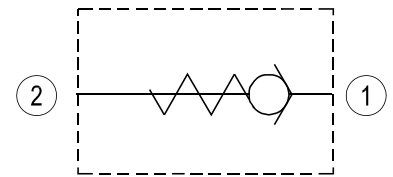


Dimensions

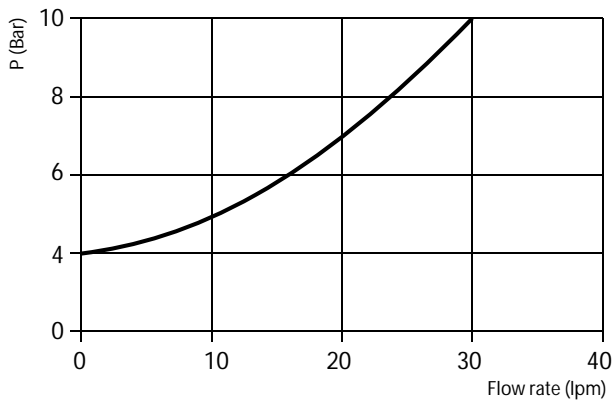


A	B	C	D	E H7	F	G	H	L	M	N max	P max	Q	R	S	Hex	Weight kg
27,5	12	28	3/4-16UNF	Ø12,7	31,5	19	13	13	29	9	11	2,5	0,5	20,7	22	0,055

Hydraulic Symbol



Curves



Features

Max Flow Rate	20 lpm
Max Pressure	350 bar
Cracking Pressure	4 bar
Tightening Torque	50-60 Nm

Materials: Zinc plated steel cartridge.

Ordering Code

CVC 20

Ordering Code Example: CVC20.