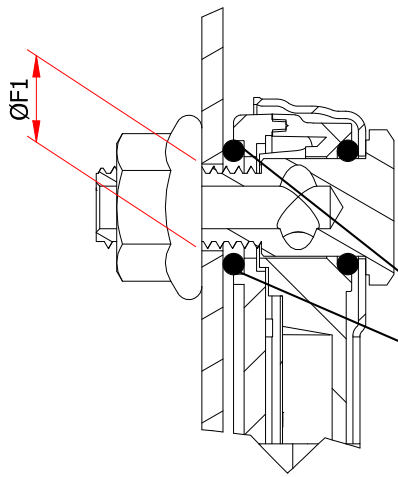


- 1 = Transparent main body
- 2 = Flanged hex nut
- 3 = Hollow bolt
- 4 = Metal shell



Special Executions

- **Model XL-T/CX** made from special resin resistant to fluid containing alcohol and anti-freeze liquids.
- **Model XL-T/RB** with floating red ball to improve the visibility of the fluid level of light colored liquids.
- **Model XL-T/PLAST:** external casing made from polyamide 66 30% fiberglass reinforced.
- **Model XL-T/OR** back seal provided through O-Ring in NBR synthetic rubber.
- **Model XL-T/V** with O-Ring seal made from FKM VITON®.

Code	I	H1	H2	F	E	A	L1	L2	ØF1	L3	Weight gr
XL/03	76	107	31	M10-M12	17.5	24.5	37		10.2-12.2	34	135
XL/03T	76	107	31	M10-M12	17.5	24.5		37	10.2-12.2	34	135
XL/05	127	158	31	M10-M12	17.5	24.5	73		10.2-12.2	85	187
XL/05T	127	158	31	M10-M12	17.5	24.5		78	10.2-12.2	85	187