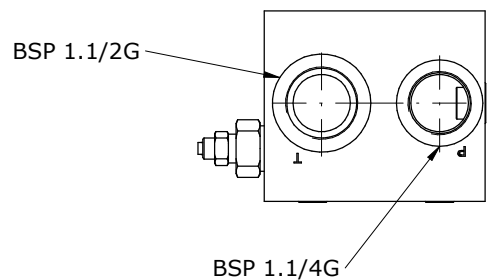
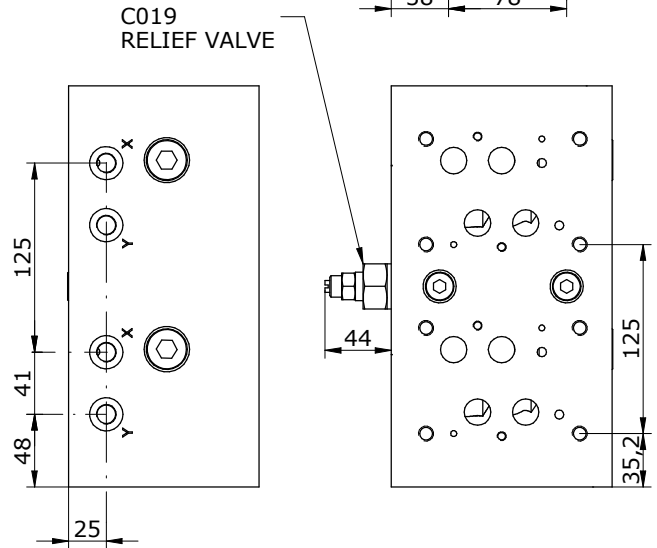
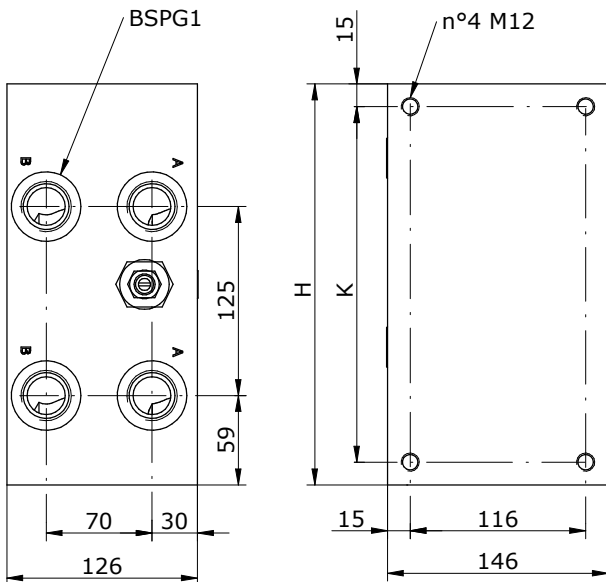
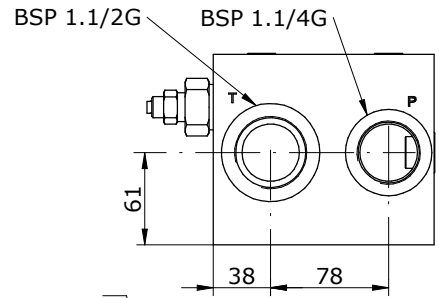
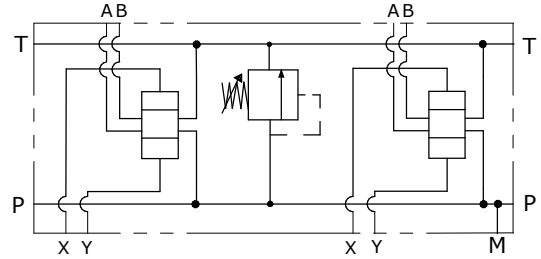


Schema idraulico
 Hydraulic diagram



POS.	02	03	04	05
H	265	390	515	640
K	235	360	485	610

E_ 16 - 06 - 100 - _____

S = STEEL

MOUNTING POSITIONS: 02 ÷ 05

0 = WITHOUT RELIEF VALVE
 1 = 10-245 bar
 2 = 245-350 bar

0 = WITHOUT RELIEF VALVE
 1 = WITH RELIEF VALVE
 2 = RELIEF VALVE READY