



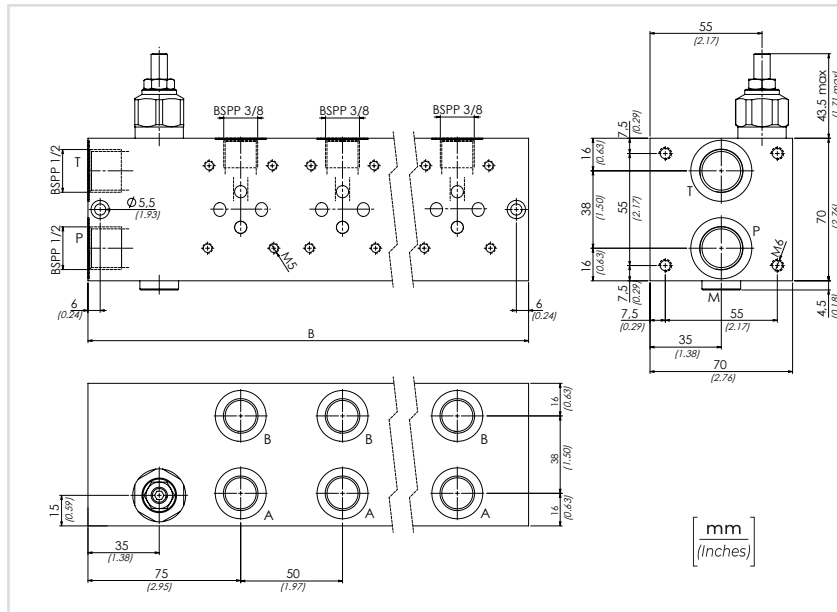
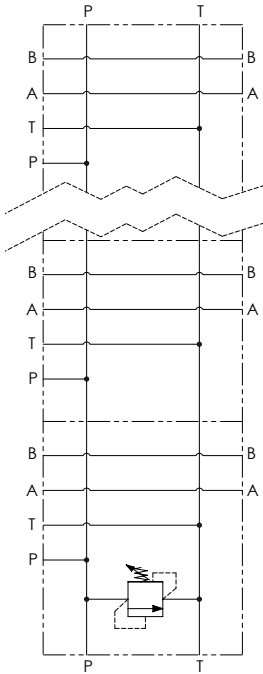
01 02 03 04 05

**CODICE ORDINAZIONE**  
ORDERING CODE

<b>BM</b>		<b>A</b>		
-----------	--	----------	--	--

<b>01</b>	BASI SI IN PARALLELO IN ALLUMINIO UTILIZZI LATERALI CON VALVOLA DI MASSIMA (ALUMINIUM PARALLEL MULTIPLE MANIFOLDS - LATERAL PORTS WITH RELIEF VALVES)	<b>BM</b>
<b>02</b>	NUMERO DI STAZIONI (NUMBER OF STATIONS)	2 3 4 5 6 7 8
<b>03</b>	ALLUMINIO (ALUMINIUM)	A
<b>04</b>	REGOLAZIONE (SETTING)	Chiave (Screw) Volantino (Handknob) Tipo (Type) <b>81300109</b> C V
<b>05</b>	MOLLA (SPRING) <b>10/90 bar</b> (145/1305 PSI)	<b>12 bar/al giro</b> (174 PSI/turn) 1
	MOLLA (SPRING) <b>20/210 bar</b> (290/3045 PSI)	<b>30 bar/al giro</b> (435 PSI/turn) 2

**SCHEMA IDRAULICO**  
HYDRAULIC CIRCUIT



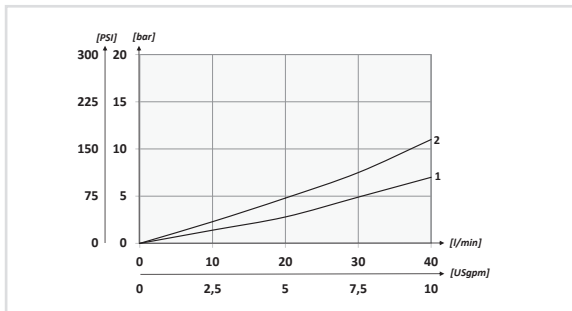
**ATTACCHI**  
PRESSURE DROPS

<b>P-T</b>	<b>BSPP 1/2</b>
<b>M</b>	<b>BSPP 1/4</b>
<b>A-B</b>	<b>BSPP 3/8</b>

**Il blocco in alluminio anodizzato nero può essere utilizzato per pressioni fino a 210 bar (3045 PSI)**

Aluminium manifold black anodized can be suitable for pressures up to 210 bar (3045 PSI)

**PERFORMANCES**



**DATI TECNICI / TECHNICAL DATA**

<b>Olio idraulico</b> - Mineral oil	<b>ISO 6743/4</b> (DIN 51524)
<b>Viscosità olio</b> - Oil viscosity	<b>15-250 mm<sup>2</sup>/s</b> (15 to 250 cSt)
<b>Classe di contaminazione max</b> Max contamination index	<b>ISO 4406:1999 Classe 19/17/14</b>
<b>Temperatura dell'olio</b> - Oil temperature	<b>-20°C +80°C</b> -4°F +176°F
<b>Temperatura ambiente</b> - Environment temperature	<b>-20°C +50°C</b> -4°F +122°F

**È indispensabile l'utilizzo di un filtro per proteggere la valvola (filtrazione consigliata 15 µm)**  
It is necessary a filter use to protect the valve (advised filtration 15 µm)

**CARATTERISTICHE TECNICHE / TECHNICAL CHARACTERISTICS**

TIPO TYPE	N. DI STAZIONI N. OF STATIONS	B	PORTATA MAX (l/min) MAX FLOW (USgpm)	PRESSIONE MAX (bar) MAX PRESSURE (PSI)	PESO APPROX (kg) APPROX WEIGHT (lbt)	TIPO DI VALVOLA TYPE OF VALVE
<b>BM2-RV</b>	<b>2</b>	<b>160</b> (6.30)	<b>40</b> (10.6)	<b>210</b> (3045)	<b>2,1</b> (4.6)	<b>VMD40S</b>
<b>BM3-RV</b>	<b>3</b>	<b>210</b> (8.27)			<b>2,7</b> (6)	
<b>BM4-RV</b>	<b>4</b>	<b>260</b> (10.24)			<b>3,3</b> (7.3)	
<b>BM5-RV</b>	<b>5</b>	<b>310</b> (12.20)			<b>3,9</b> (8.6)	
<b>BM6-RV</b>	<b>6</b>	<b>360</b> (14.17)			<b>4,5</b> (10)	
<b>BM7-RV</b>	<b>7</b>	<b>410</b> (16.14)			<b>5,3</b> (11,7)	
<b>BM8-RV</b>	<b>8</b>	<b>460</b> (18.11)			<b>5,9</b> (13)	