

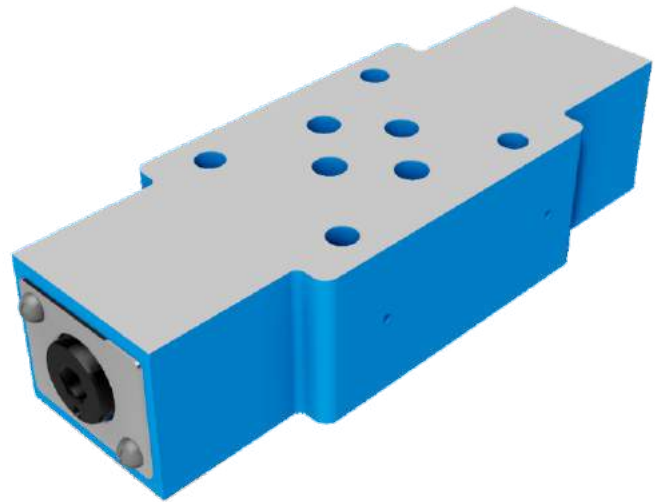


VALVOLE DI FLUSSO

Z2FS6

MODULAR THROTTLE/CHECK VALVES

Z2FS6 SERIES THROTTLE/CHECK VALVES ARE USED TO RESTRICT FLOW IN ONE DIRECTION WHILE ALLOWING FREE-FLOW, AND IN THE OPPOSITE DIRECTION AS CHECK VALVES.

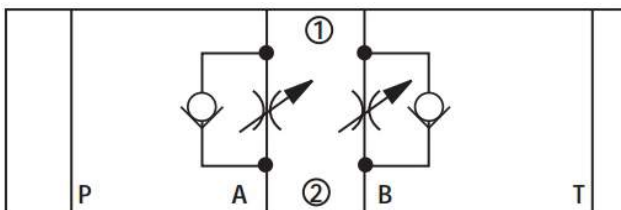


TECHNICAL DATA

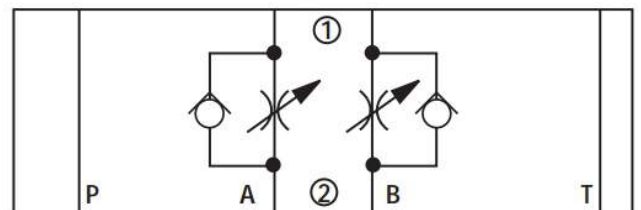
SIZE	6
OPERATING PRESSURE (MPA)	31.5
MAX. FLOW RATE (L/MIN)	80
FLUID TEMPERATURE (°C)	-30 - 80
WEIGHT (KG)	1
VALVE BODY (MATERIAL)	CASTING PHOSPHATING SURFACE

SCHEMES

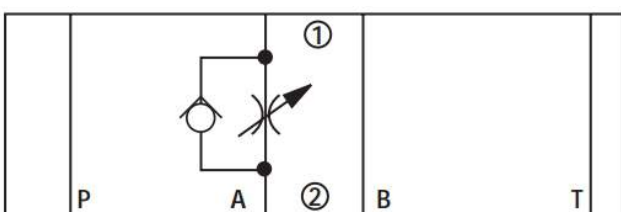
1 = COMPONENT SIDE, 2 = PLATE SIDE



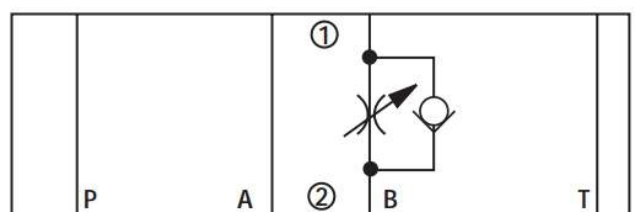
Z2FS6



Z2FS6



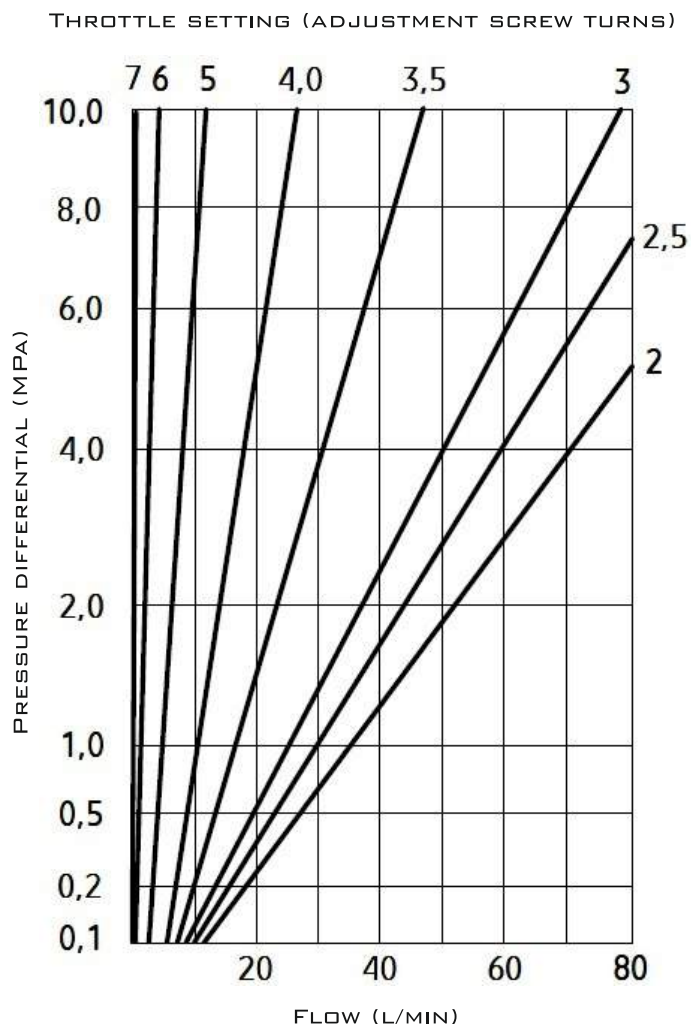
Z2FS6 A



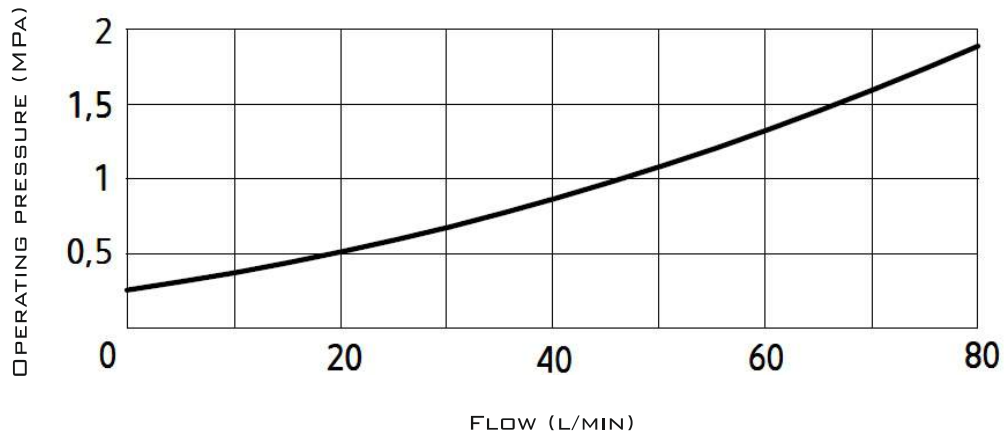
Z2FS6 B



CHARACTERISTIC CURVES



FLOW RESISTANCE CURVE FOR THE CHECK VALVE (THROTTLE CLOSED)



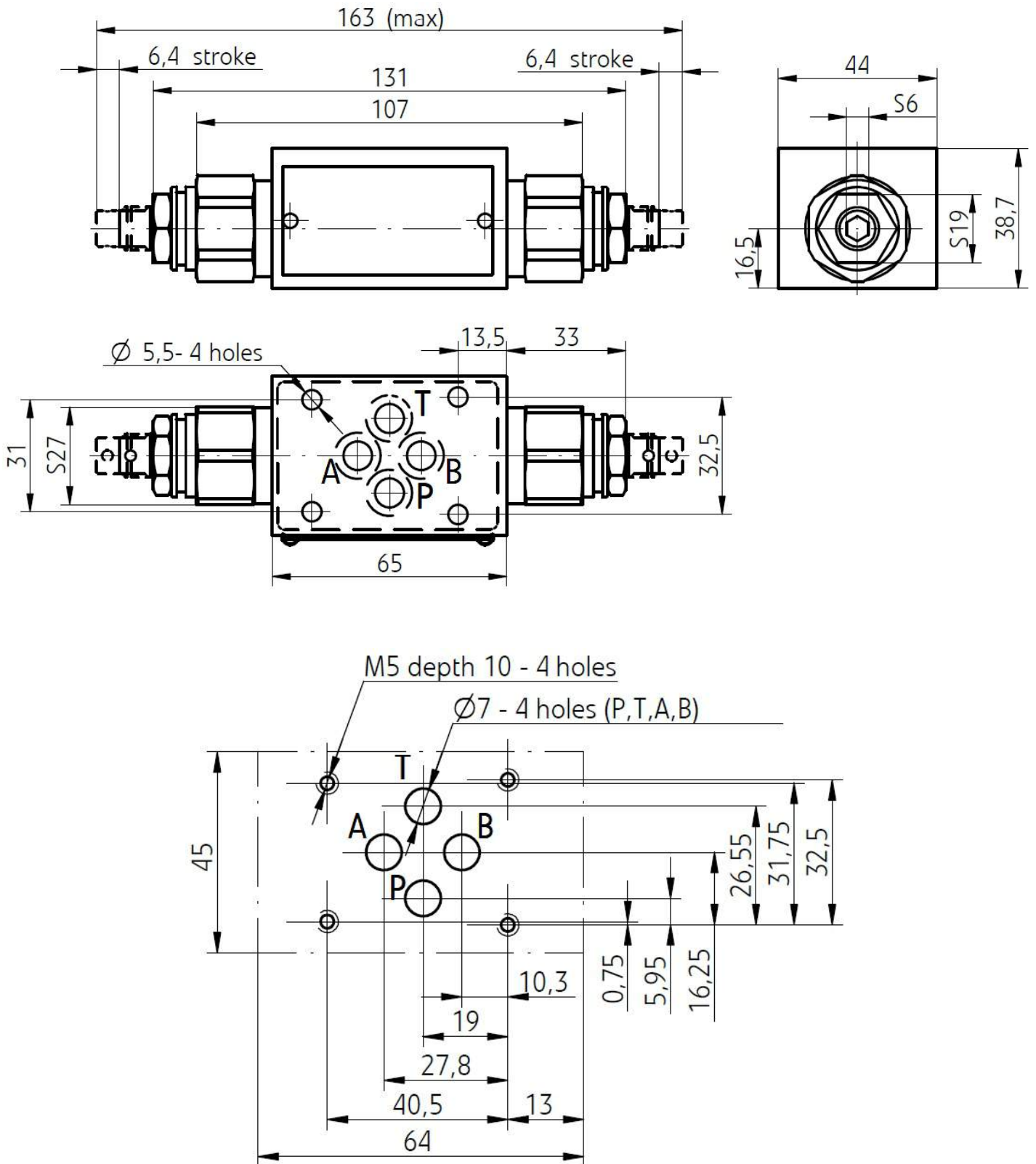


VALVOLE DI FLUSSO

Z2FS6

MODULAR THROTTLE/CHECK VALVES

SUBPLATE INSTALLATION DIMENSIONS



Z2FS6

VALVOLE DI FLUSSO



MODULAR THROTTLE/CHECK VALVES

ORDER CODE

Z2FS	6				
------	---	--	--	--	--

6=6 SIZE

NO CODE=PORT A, B WITH THROTTLE
A=PORT A WITH THROTTLE
B=PORT B WITH THROTTLE

3X=30-39 SERIES
4X=40-49 SERIES

ADDITIONAL REMARKS

NO CODE=NBR SEALS
V=FKM SEALS